



THE ART OF ENTERTAINING

FRAMELESS

HOSPITALITY BY
RHC.

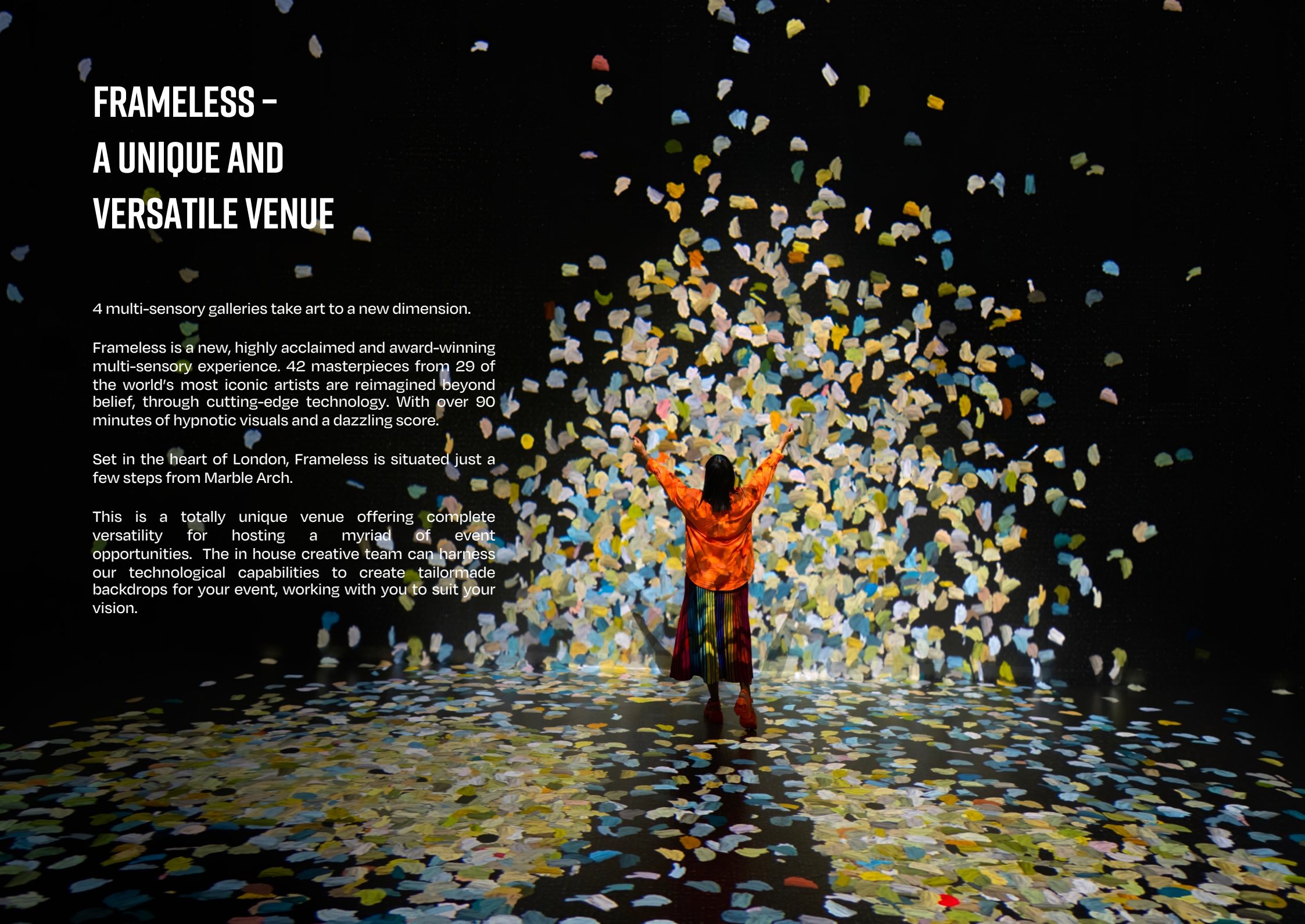
FRAMELESS – A UNIQUE AND VERSATILE VENUE

4 multi-sensory galleries take art to a new dimension.

Frameless is a new, highly acclaimed and award-winning multi-sensory experience. 42 masterpieces from 29 of the world's most iconic artists are reimagined beyond belief, through cutting-edge technology. With over 90 minutes of hypnotic visuals and a dazzling score.

Set in the heart of London, Frameless is situated just a few steps from Marble Arch.

This is a totally unique venue offering complete versatility for hosting a myriad of event opportunities. The in house creative team can harness our technological capabilities to create tailor-made backdrops for your event, working with you to suit your vision.





THE ART OF ENTERTAINING

There's an art to creating a great event and it usually begins with a great venue. At Frameless, we have a wide range of private hire options.

If it's a large-scale event, we can talk to you about exclusively hiring the entire venue.

If it's a more intimate gathering we can introduce you to our bespoke, Blank Canvas room where you can create the perfect environment to suit your event.

Our hospitality partner, Rhubarb Hospitality Collection is internationally renowned and with more than 25 years' experience, bring unrivalled flair and an eye for detail to every event they deliver.

EXCLUSIVE HIRE

An ideal location for an imaginative and unforgettable large-scale event, Frameless was created with exclusive venue hire in mind.

Guests enter at street level into a large, bright lobby before being guided down to the four individual galleries, with a combined capacity of 450 for a reception and 250 for a seated dinner. There are digital branding opportunities throughout the venue and a wide range of set-ups available which would suit:

- Receptions
- Dinners
- Awards
- Parties
- Brand Activations and Filming
- Conferences



Run your way.



NEW BALANCE

Brief:
To provide an unforgettable experience for the global New Balance team and celebrate the 2023 'Run Your Way' marathon campaign.

Event:
Reception and live music performances for 450 guests including press, content creators and industry figures.



Y-TREE

Brief:

As the first event ever hosted at Frameless, to utilise the state-of-the art technology to create an immersive wallpaper for the globally streamed event.

Event:

An evening conference for 200 business leaders followed by a reception that allowed guests to be the first to experience Frameless and its ground breaking content.



WONDER STRUCK

WONDER STRUCK

Brief:

To take guests on a journey through sunrise, the Northern Lights to a starry night during a panelled interview and dinner.

Event:

Dinner for 140 guests showcasing the best in seasonal, locally sourced food.

LA MER

LA MER

Brief:
To tell the story of La Mer from source to luxury beauty counters around the world, culminating in dinner on the shores of Lake Vancouver.

Event:
An intimate dinner for 34 cultural icons across various art forms including fashion, ballet and the visual arts.

EXCLUSIVE USE INFORMATION

All four immersive Gallery experiences and Café Bar included

Choice of background in Blank Canvas using the immersive digital content

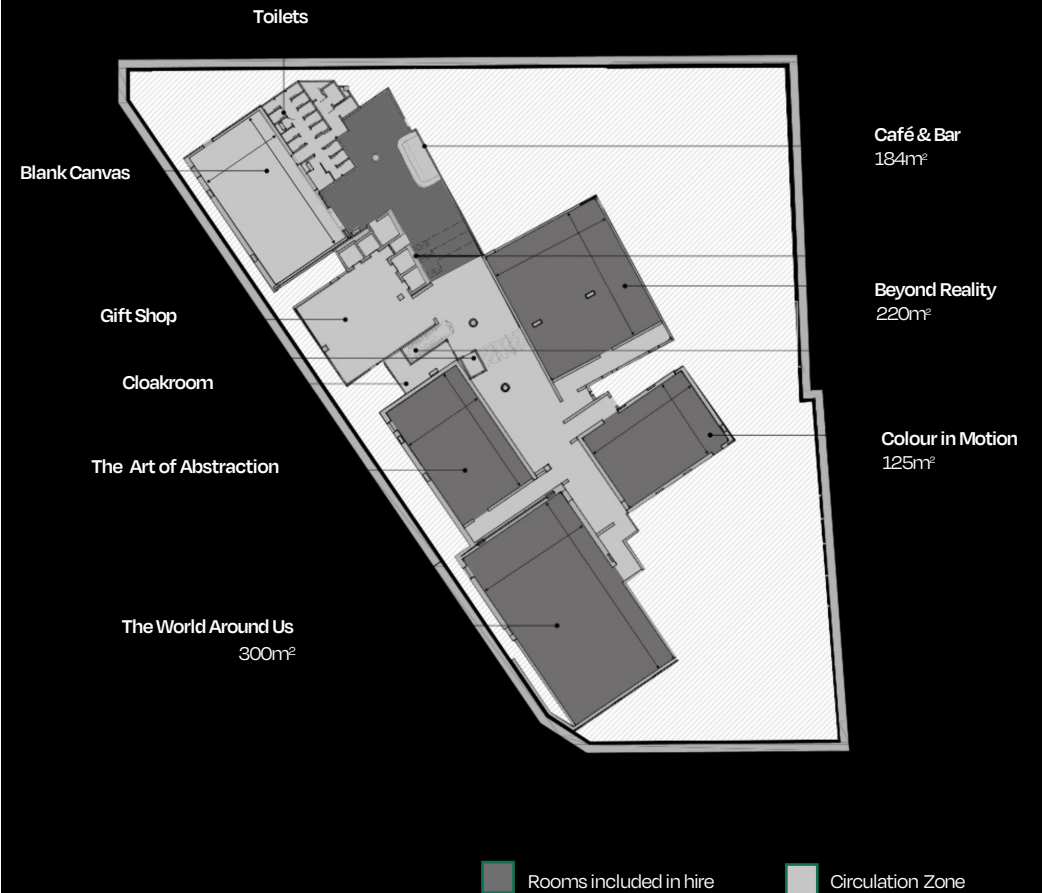
Electrical event panels available including access to 16amp and 32amp C-Form. Twin switch 13amp sockets. Two data points (Ethercon to Cat6a)

Plug in technology for presentations in The World Around Us

Opportunity to project your own content on Gallery walls (POA)

Event wifi and ethernet connectivity for live streaming and internet

Exclusive Hire	Capacities			
	Reception	Dinner	Cabaret	Theatre
	450	250	175	250



BLANK CANVAS ROOM HIRE: YOUR ROOM, YOUR WAY

Our Blank Canvas gallery is the starting point for you to create something unique to your event. Its walls have been designed to project a choice of imagery from the main galleries, but they can also be used to project something more personal, like your company messaging, content or logo, suitable for:

- Drink receptions
- Corporate dinners
- Breakfast meetings
- Awards ceremonies
- Presentations
- Parties: e.g. birthdays
- Brand Activations
- Conferences (half day or full day)

*Blank Canvas is only available for hire for events with a lead time of less than 2 months from the event date.



BLANK CANVAS HIRE INFORMATION

Specification:

160 m²

Ceiling height 6.3m (mezzanine 4.8m)

Drape partitioning to facilitate smaller gallery requirements

Plug and play technology for presentations

Choice of background wallpaper using the immersive digital content

Opportunity to deliver company logo and content (content charges apply)

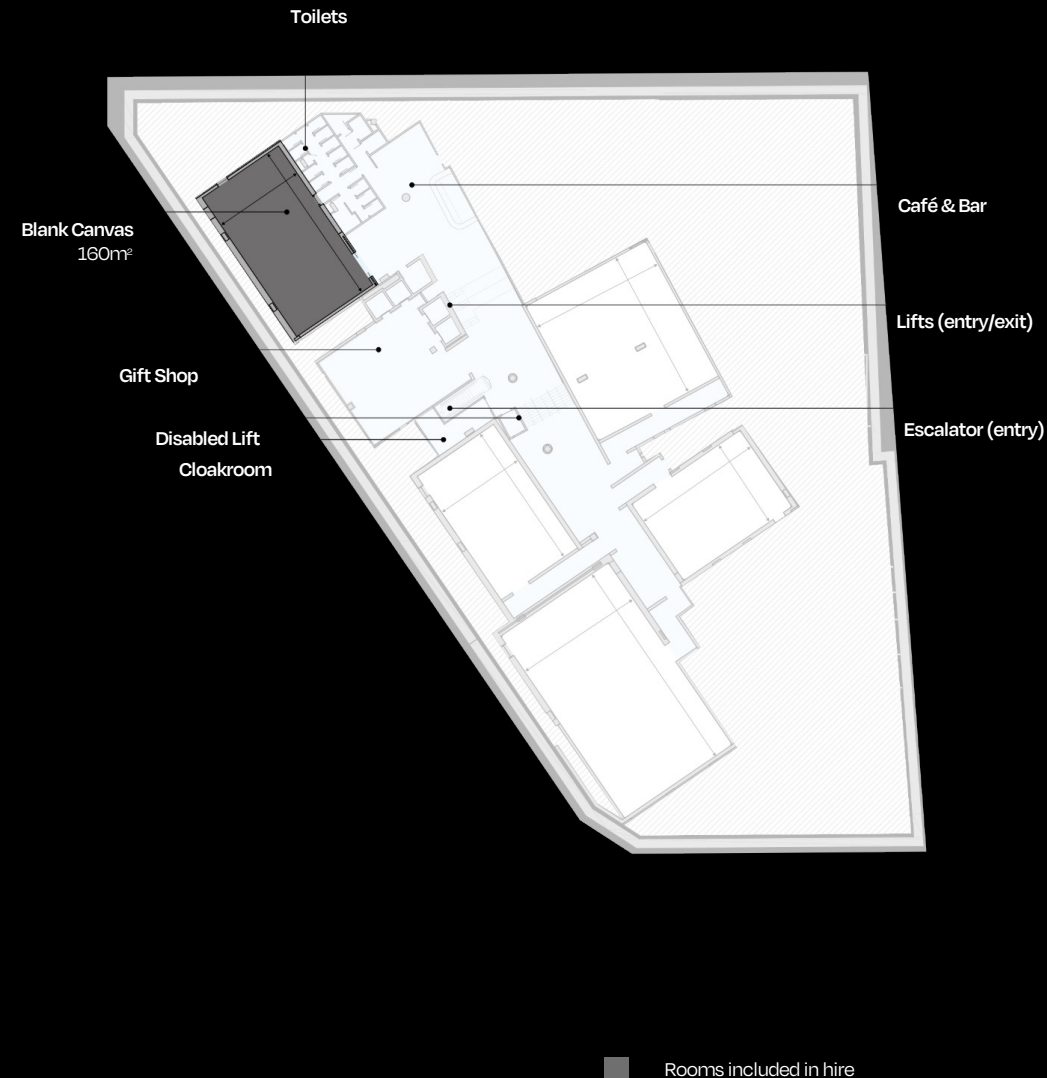
Two Event panels with 3 phase, 16 & 32 amp C-Form power.

Event wifi and ethernet connectivity for Live streaming and internet

Audio mixing console, handheld and headset mics, connected to a 360 surround sound system

	Dimensions	Capacities			
		Reception	Lunch/ Dinner	Cabaret	Theatre
Blank Canvas Before 10.30	17.2m x 9.2m	130	NA	78	130
Blank Canvas 10:30-16:30		130	60	42	60
Blank Canvas 17:30-23:30		130	70-80	78	60
Blank Canvas & Café Bar* 17:30-23:30		180	100	78	130

*Subject to availability



PRICING

Room	Time of Day	Hire Period - Including set up and break down	Price £ exc VAT*
Exclusive hire of the entire venue	Evening	1730 to 2300	From £18,000
	Daytime	Please contact us	POA
Blank Canvas*	Breakfast	0700 to 1030	£2,500
Blank Canvas*	4 hours	0800 to 1200 or 1300 to 1700 or 1100 to 1500	£3,500
Blank Canvas*	Day	0900 to 1630 (Mon – Fri)	£5,000
Blank Canvas*	Evening	1730 to 2300	From £7,000

What's included?

Private use of the space
Security
Cleaning
Lectern

Optional Extras

Audio-visual services
Bespoke projections
Frameless Official Guide or mementoes
Expert speakers eg art curator

*Blank Canvas is only available for hire for events with a lead time of less than 2 months from the event date.

WHAT'S ON THE MENU?

Everyone knows that great food is an essential ingredient of a great event. And few people know more about how to deliver it than our hospitality partner, Rhubarb Hospitality Collection.

Their expert teams can guide you through every step of your event journey. From advice and support at the planning stage to delivering it beautifully on the day.

Each menu is designed to reflect both the seasons and current food trends, created with delicious quality ingredients, with a nod to the immersive nature of your surroundings.

For a selection of Frameless menu package options and prices please view our separate menu brochure.

FRAMELESS EVENT SUPPLIERS

We believe that to get the best you have to work with the best. That's why we only partner with trusted industry experts. People who know how to deliver outstanding service in this exciting venue. All, tailored to suit a range of budgets.

FLOWERS

Lavender Green

www.lavendergreen.co.uk
info@lavendergreen.co.uk
0207 127 5303

Mary Jane Vaughan

www.maryjanevaughan.co.uk
maryjane@maryjanevaughan.co.uk
0207 385 8400

Wild About

www.wildabout.co.uk
info@wildabout.co.uk
07870 775779

Titania's Garden

www.titaniassgarden.co.uk
info@titaniassgarden.co.uk
0207 724 0187

VISUALISATION

Preevue

Preevue.com
robert.allan@preevue.com
0207 078 8892

PRODUCTION

Event Concept

www.eventconcept.co.uk
info@eventconcept.co.uk
0207 740 3988

Peachy Productions

www.peachyproductions.com
philip.french@peachyproductions.com
01483 724751

Wise Productions

www.wiseproductions.co.uk
events@wiseproductions.co.uk
0208 991 6922

Banana Split Production

www.banana-split.com
hello@banana-split.com
0208 200 1234

BRANDING

Internal/External

DPI

dpi.uk.com
paul@dpi.uk.com
01682 639 224

ENTERTAINMENT

ALR Music

www.alrmusic.co.uk
alex@alrmusic.co.uk
0203 732 0232

Private Drama

www.privatedramaevents.com
adam@privatedrama.com
0208 749 0987

Sternberg Clarke

www.sternbergclarke.co.uk
Adam@sternbergclarke.co.uk
0208 877 1102

AOK Events

www.aokevents.com
entertains@aokevents.com
0208 222 8420

ART CURATORS AND CONSULTANTS

Artscapes UK Ltd

www.artscapesuk.com
0203 948 1895

AUDIO VISUAL

Creative Technology

www.ct-group.com
frameless@ctlondon.com
01293 582 000

Luke Halls

www.lukehalls.com
jenny@lukehalls.com
07718 115 460

Lightfield

www.lightfield.london
info@lightfield.london
Jonny Cox
0777 599 2467

Autograph Sound

www.autograph.co.uk
adamb@autograph.co.uk
0203 865 2368

PREFERENTIAL ACCOMMODATION RATES FOR FRAMELESS EVENT GUESTS

As a valued client of Frameless we are delighted to offer you an exclusive 10% discount off best rates for accommodation at The Cumberland Hotel and Clermont Hotel Group across London as part of our Official Hotel Partnership.

Situated just a two-minute walk from Frameless, The Cumberland is perfectly located for guests attending your event.

For further details please contact

Groups@clermonthotel.group

FRAMELESS



LOCATION

Frameless

6 Marble Arch

London W1H 7AP



Walking time from the Underground stations

- Marble Arch
- Bond Street
- Edgware Road
- Lancaster Gate
- Marylebone
- Baker Street
- Paddington

Time

- mins
- 10 mins
- 12 mins
- 15 mins
- 15 mins
- 16 mins
- 17 mins

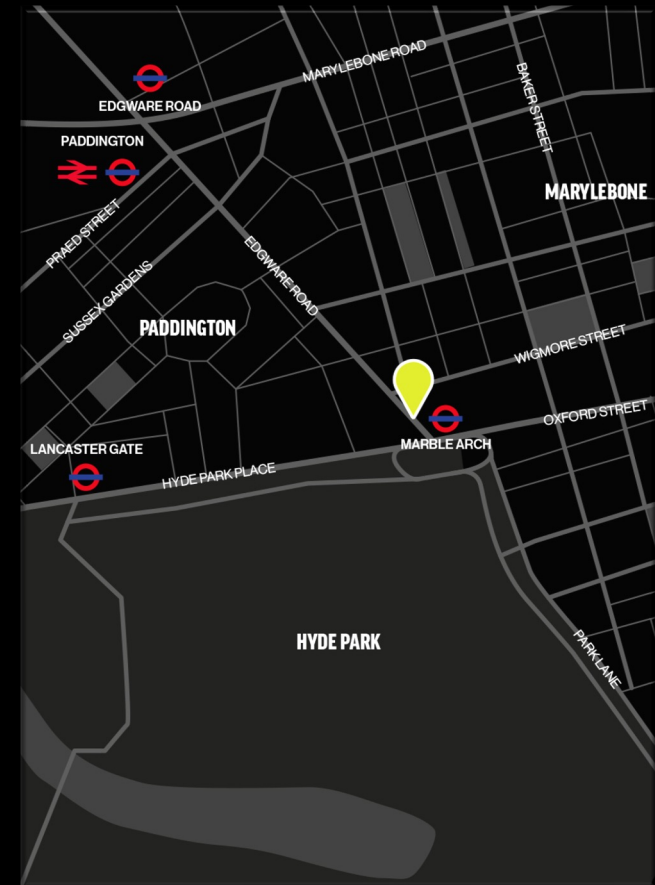


Travel time from the Railway stations

- Victoria
- Marylebone
- Waterloo
- Kings Cross
- London Bridge
- Canary Wharf

Time

- 14 mins
- 15 mins
- 16 mins
- 20 mins
- 22 mins
- 25 mins



OUR INVITATION TO YOU

Thank you for taking the time to consider Frameless for your next event. We'd be delighted to help you create an unforgettable experience. All we need is an invitation.

Contact us at:
events@frameless.com



LONDON VENUE
& CATERING
AWARDS 2023

WINNER

MOST VERSATILE
LONDON VENUE -
UP TO 800 ATTENDEES
RECEPTION STYLE

FRAMELESS

HOSPITALITY BY
RHC.